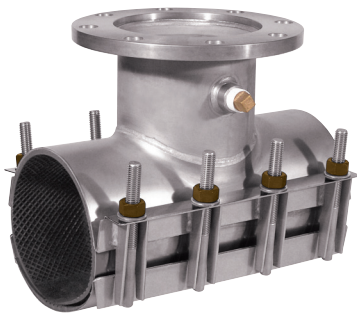


## Stand Out with Stainless

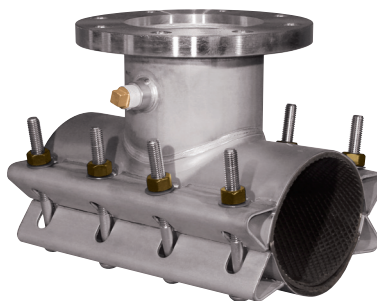
Ford Meter Box offers a complete line of strong and durable 304 stainless steel waterworks products, but did you know that type 316 stainless steel is also available? With an added corrosion-resistance factor and longer life span, 316 stainless steel is the perfect choice for severe environments. Just add “-Q” to the end of the part number.

### Products Available with 316 Stainless Steel

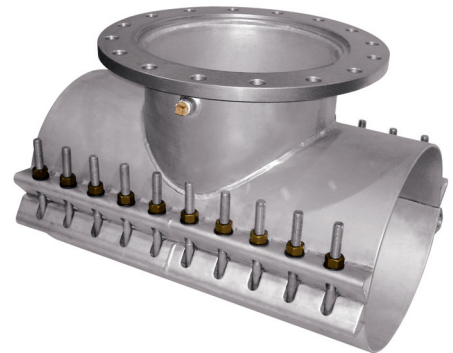
#### Tapping Sleeves



**FAST Series**



**FTSS Series**



**FTSAS Series**

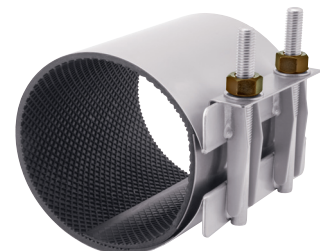
#### Service Saddles



**FS300 Series**



#### Repair Clamps



**FS Series**

#### Benefits of Type 316

- Capable of withstanding hydrogen sulfide in water applications
- Excellent ductility allows for sealing over pipe irregularities
- Higher resistance to pitting and crevice corrosion in chloride environments
- Fully passivated to restore natural, corrosion-resistant properties