

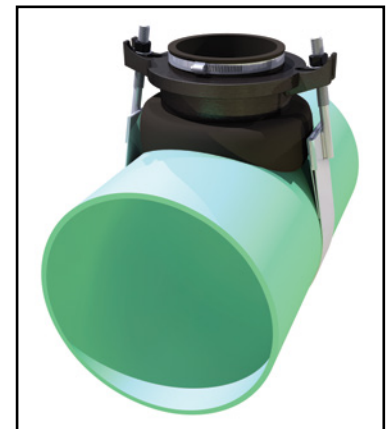


# Ford Sewer Saddle

Product Release

05/2015

Looking for a reliable connection to your sewer main? The Ford Meter Box Sewer Saddle is now available in a wide range of sizes. When the gasket compresses against the sewer main, you will have a connection that provides comfort and security where it matters. The Ford Sewer Saddle is made to perform and made to last.



## Features:

- Available in three sizes with 4" or 6" branch outlets
- Adjustable stainless steel strap for a wide range of pipe sizes
- 7 psi working pressure
- Ductile iron gland is 65-45-12 per ASTM A536 with Armorguard e-coat for superior protection
- Gasket is Buna-N (NBR) per ASTM D2000, ideal for sewer applications
- 304 stainless steel band is fully passivated for maximum corrosion resistance
- Quick and simple installation

## Ordering Information

Catalog Number	Range	Nominal Branch Size	Branch Pipe Range	Approx. Wt. Lbs.
FSS-1440-4	6.27" - 14.40"	4"	4.20" - 4.80"	10.3
FSS-2580-4	14.40" - 25.80"			11.5
FSS-5080-4	25.80" - 50.80"			13.1
FSS-1440-6	8.00" - 14.40"	6"	6.27" - 6.66"	12.1
FSS-2580-6	14.40" - 25.80"			13.2
FSS-5080-6	25.80" - 50.80"			15.3

**The Ford Meter Box Company, Inc.** 775 Manchester Avenue, P.O. Box 443, Wabash, Indiana, USA 46992-0443  
Telephone: 260-563-3171 FAX: 800-826-3487 Overseas FAX: 260-563-0167 [www.fordmeterbox.com](http://www.fordmeterbox.com)

FFSEWS