

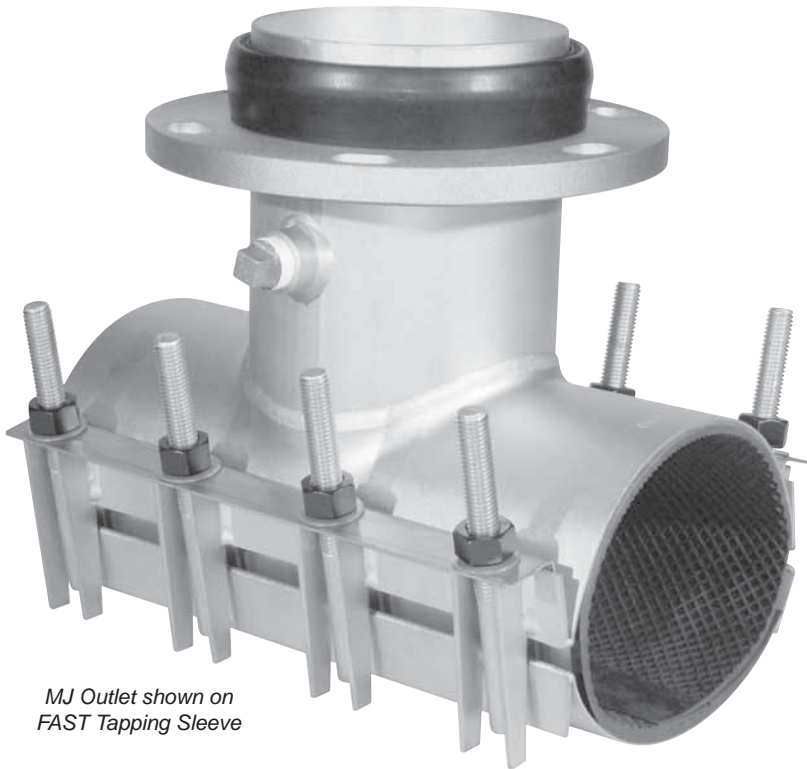


MJ Tapping Sleeves

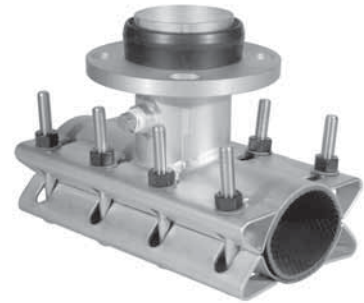
Product Release

03/2008

Ford Tapping Sleeves with Mechanical Joint Outlet



MJ Outlet shown on FAST Tapping Sleeve



MJ Outlet shown on FTSS Tapping Sleeve

"-MJ" Outlet Sizes
4"
6"
8"
10"
12"
*14"
*16"
*18"
*20"
*24"

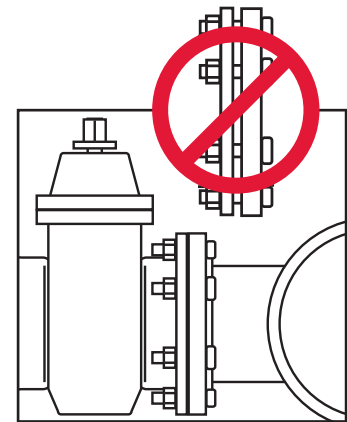
To order: Add "-MJ" to the end of the catalog number.

Example: FAST-700-6-MJ

* These outlet sizes not available on the FAST style.

Features and Benefits:

- Revolutionary outlet design eliminates alignment concerns between the valve and sleeve.
- Simpler valve installation – just tighten the fasteners until the valve face and the tapping sleeve flange make complete contact.
- Visual indicator of a proper installation. There is no gap between the sleeve flange and the valve. Alignment with the valve is ensured.
- No gasket material is exposed outside the connection and the gasket CANNOT blow out.
- Outlet fasteners do not need to be rechecked and retightened after the initial installation. (Standard mechanical joint installations require multiple passes and careful, time-consuming alignments.)
- The face-to-face contact prevents the joint from flexing.
- Available in stainless steel or carbon steel outlets.
- Available on all Ford-style tapping sleeves.



Ford's face-to-face design ensures proper alignment

Ford offers the easiest and safest MJ outlet design available. For additional information on tapping sleeves with the MJ outlet option, contact your local Ford Distributor or The Ford Meter Box Company.

The Ford Meter Box Company, Inc. 775 Manchester Avenue, P.O. Box 443, Wabash, Indiana, USA 46992-0443
Telephone: 260-563-3171 FAX: 800-826-3487 Overseas FAX: 260-563-0167 <http://www.fordmeterbox.com>